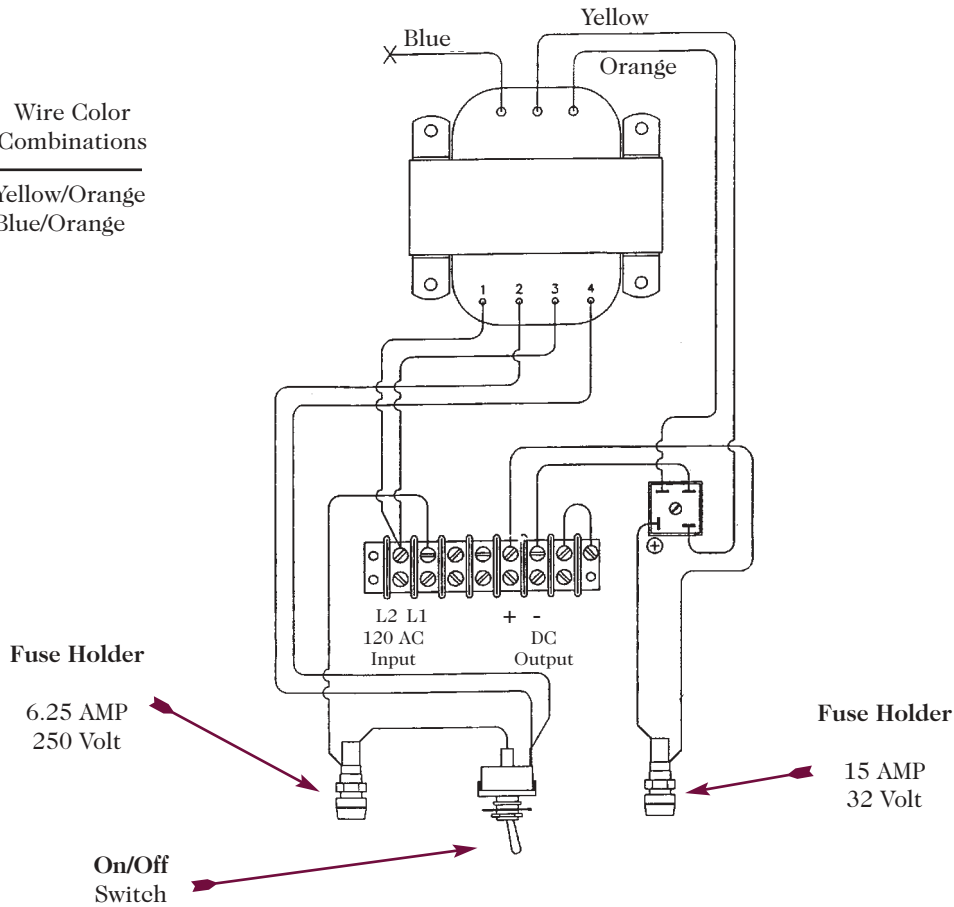


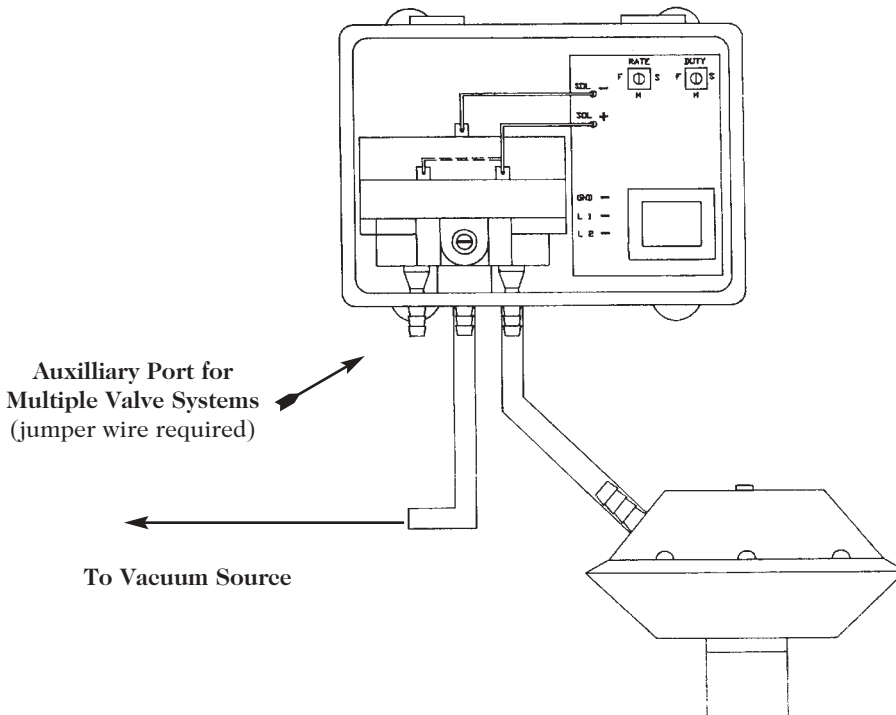
Forms and Diagrams

SCHLUETER AC/DC POWER SUPPLY FOR DETACHERS AND PULSATORS

| Output Voltage | Wire Color Combinations |
|----------------|-------------------------|
| 20 Volts DC | - Yellow/Orange |
| 24 Volts DC | - Blue/Orange |



SCHLUETER SAFGARD AIR INJECTOR SYSTEM



Schlüter Air Injector Hook-Up Schematic

The Schlüter Air Injector is easy to use and simple to install. Follow the instructions given for installation.

HOOK-UP: Bring your power in on the terminals shown below:

- L 3 Ground (*green*)
- L 1 Hot (*Black or Red*)
- L 2 Neutral (*white*)

Before hooking up the power verify that the solenoid terminals marked *SOL-*, and *SOL+*, are properly connected. Adjust the DUTY POT to 50% and the RATE POT to F (fast). And make adjustments from those settings.

OPERATION: Adjust the DUTY POT to the percentage which you desire. It controls how long the solenoid is on and off. Adjust the RATE POT to how fast you want it to run, F indicated fast, M indicates medium, and S indicates slow.