

Forms and Diagrams

PARTS BREAKDOWN FOR P-3000 ELECTRIC PARLOR DOOR OPERATOR

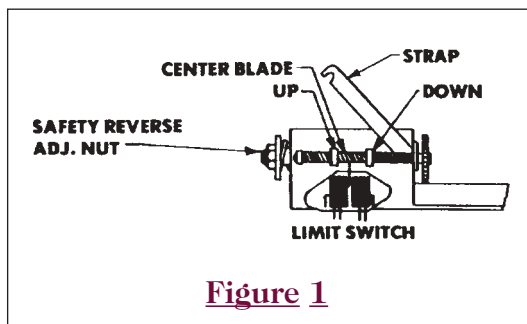
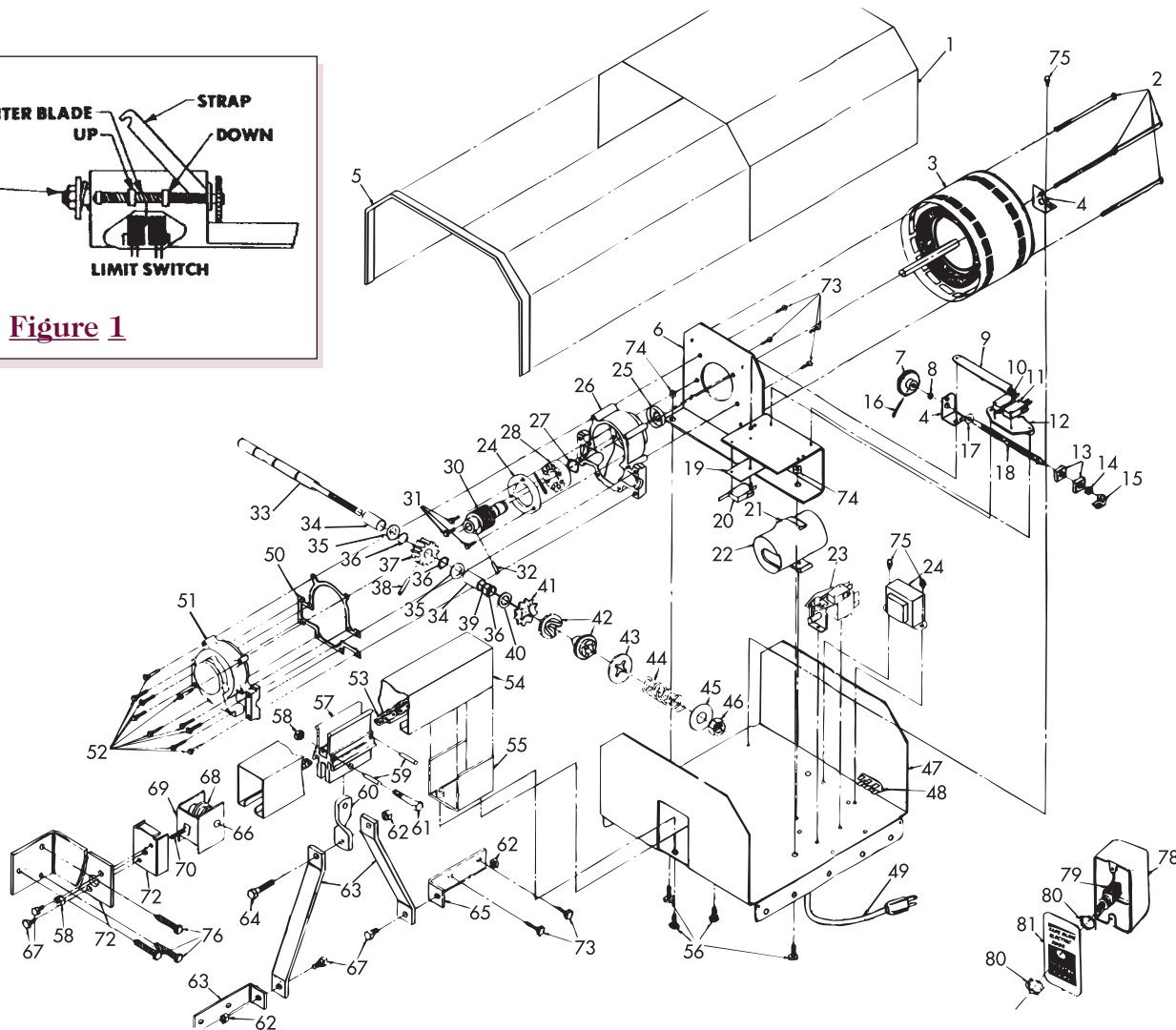


Figure 1



Safety Reverse Adjustment

The SAFE GLIDE P3000 operator is equipped with an instant safety reverse feature to provide the maximum of safety. The force required can be adjusted to make the operator more or less sensitive.

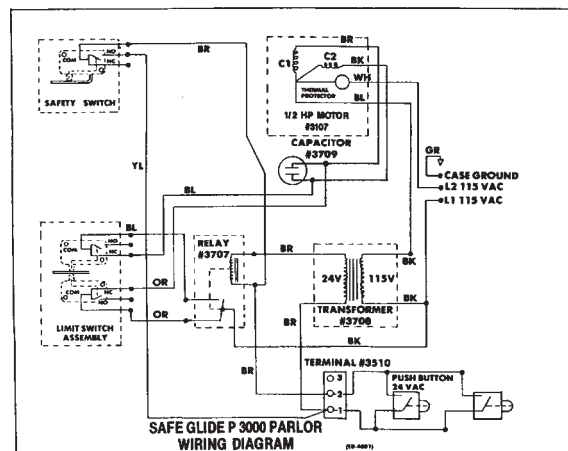
To adjust safety reverse: Remove operator cover by removing four screws. Locate the adjusting nut (see figure 1). Using a pair of channel lock pliers or a 15/16 socket, turn the nut clockwise to increase the spring load (less sensitive to obstructions) pressure. Turn the nut counter clockwise to decrease the spring load (more sensitive to obstructions) pressure. Replace the operator cover, securing it with four screws in the operator base.

Limit Adjust

Disconnect power cord when making limit adjustment. The limits are preset at the factory for approximate maximum door travel. If adjustment should become necessary, remove operator cover and slide trap (see figure 1) away from limit shaft. Each quarter turn of the nut changes travel approx. one inch. Adjust limit nut toward the operator powerhead (open travel door) and inside nuts control travel away from powerhead (closed travel door). After adjusting limit nuts, slide strap back into original position.

CAUTION NOTE: Do Not run operator unless the limit strap is secure in place!

Reconnect the power and test travel. If further adjustment is required, repeat above steps until door travel is correct. replace operator cover securing with four screws in operator base.



OPERATOR MAINTENANCE

Forms and Diagrams

Item #	QTY	Description	EDKO Part #	Schlueter Part #	Item #	QTY	Description	EDKO Part #	Schlueter Part #
1	1	cover	3516	495181	41	1	sprocket(13t)	3319	495371
2	4	8-32x4 3/16 bolt	1110	495131	42	2	clutch	3316	495501
3	1	motor	3107	459201	43	1	drive washer	3312	495521
4	2	motor rear mtg brkt	3105	495171	44	1	clutch spring	3313	495531
5	2	cover gasket	3518	495211	45	1	5/8 US std. washer	1321*	
6	1	front mtr mtg brkt	3210	495251	46	1	5/8-18 jam nut	1308*	
7	1	limit gear	3715	495261	47	1	operator base plate	3517	495011
8	1	shaft bearing	3714	495291	48	1	terminal	3510	495041
9	1	limit strap	3703	495091	-	2	1/8x5/16 eyelet	1518	
-	1	1/8x5/16 eyelet	1518		49	1	cord set	3505	495061
10	1	limit switch w/lever	3705	495152	-	1	strain relief(*n/a*)	3504	495071
11	1	limit switch w/o lever	3727	495161	50	1	housing gasket	3403	495281
12	1	butterfly	3719	495141	51	1	housing cover	3402	495271
-	2	4-40x1/2 screw	1711*		52	10	8-32x7/8 screws	1404*	
-	4	4-40x5/8 screw	1704*		53	1	chain(10' section)	3602-10	495381
13	2	5/16 - 18 sq. nut	1707*		54	1	channel	3601-5	495451
14	1	brass washer	1702*		55	1	track mtg bracket	3654	49547
15	1	limit bracket	3704	495111	56	4	1/4-20x1/2 type 5 bolt	1214	
-	2	4-40x1/4 screw	1708*		57	1	parlor saddle	3604	495421
16	1	cotter pin	1639	495301	58	1	5/16-18 lock nut	1642*	
17	1	5/16 std washer	1701*		59	2	1/8x1 pin	1655*	
18	1	5/16-18 limit shaft	3741	495121	60	1	parlor twist brkt	3608	49559
19	1	insulator	3726	495311	61	1	5/16-18 x 1 1/4 bolt	1641*	
20	1	reverse switch	3705	495152	62	3	5/16 - 18 nut	1643	
21	1	capactor brkt	3710	495351	63	2	connecting arm	1609	495541
-	1	1/5-5/16 eyelet	1518		64	1	5/16-18 x 1 bolt	1645*	
22	1	capacitor	3709	495051	65	4	parlor base brkt	3637	495591
-	1	foam adhesive pad	3728		-	4	1/4 x 1 lag screw	1646*	
23	1	relay	3707	495021	66	1	idler shaft	3612	495592
-	2	8-32x1/4 screw	1111*		67	4	5/16-18 x 5/8 bolt	1644*	
24	1	transformer 24v	3708	495081	68	1	roller idler	3611	495593
-	2	8-32x1/4 screw	1712*		69	1	idler yoke	3615	495594
25	1	oil seal	3204	495361	70	1	5/16x2 1/2 carriage bolt	1647*	
26	1	bearing housing	3202	495362	72	1	channel mtg brkt	3621	495481
27	1	snap ring	3205*		73	4	8-32 x 3/8 screw	1216*	
28	1	ball bearing	3203	495221	74	2	1/4 - 20 nut	1215*	
29	1	bearing mtg plate	3212	495372	75	3	8-32 x 1/4 screw	1111*	
30	1	worm	3211	495391	76	3	5/16 x 1-5/8 lag screw	1649*	
31	3	8-32x1/2 screw	1217*		77	4	1/4 x 1 lag screw	1646*	
32	1	drive pin	1208*	495241	78	2	box	3738	495571
33	1	cross shaft	3314	495411	79	2	push button	3737	495581
34	2	journal bearing	3303	495431	80	4	nut	1713	
35	2	trust washer(plastic)	3304	495331	81	2	cover	3739	495561
36	3	snap ring	1315*	495341		1	chain connecting link		49539
37	1	worm gear	3317	495231			motor and trans for new door		495191
38	1	drive pin	1306	495441			one button control(square)		49555
39	1	o-ring	3302						
40	1	thrust washer(steel)	3320	495491					

*available at local hardware store

The **SAFE GLIDE** door operator has been engineered to require minimum maintenance.

LUBRICATION

MOTOR - Lubricate with electric motor oil or SAE 10 after 3 years normal use or annually when under heavy duty use.

TRANSMISSION - All bearings and gears are prelubricated at the factory and require no further maintenance under normal operation. If lubrication of gear should become necessary, remove transmission cover and apply LUBRIPLATE #630 - AA directly on gear.

CHANNEL - A small amount of grease placed on the inside of the channel occasionally will keep the saddle operating quietly.

CHAIN ADJUSTMENT - The chain is adjusted by a take-up nut at the end of the channel. Chain should be kept taut enough that it doesn't hang below the channel. **Do not over tighten chain!**