

DEALER # \_\_\_\_\_  
 DEALER \_\_\_\_\_

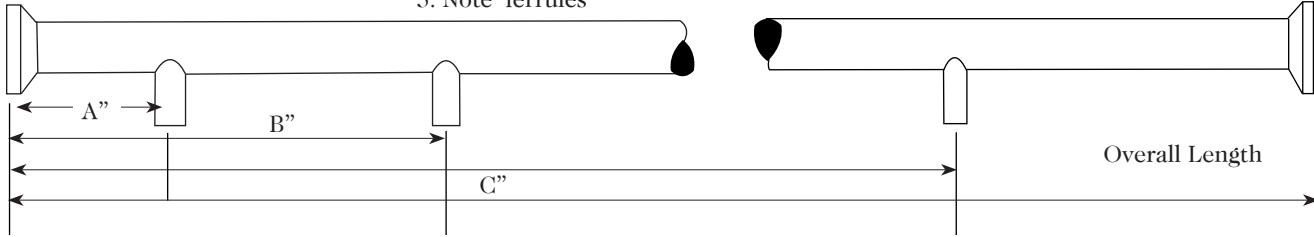
## CUSTOM PIPELINE ORDER FORM/START SHEET

**Measuring Technique**  
 Always start from left end of tubing and measure to nipple.

- Specify:**
1. Tubing size and gauge
  2. Nipple size desired
  3. Number of pieces
  4. Inlet location
  5. Note ferrules

DATE \_\_\_\_\_

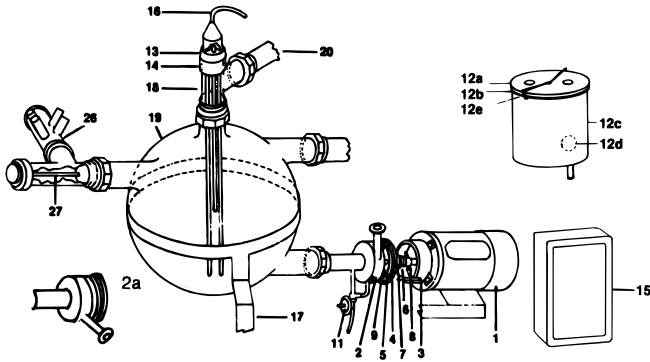
PO# \_\_\_\_\_



Work Space

## SAFGARD™ Glass Receiver Parts

(Assemblies No Longer Available)



REF.	DESCRIPTION	PART #
9	4 blade impeller for P7 pump	45753
11	Vacuum operated drain valve	45282
12	2" 6 qt. S.S. trap with nipple	45709
12a	1-1/2" X 1-1/2" cover only	45710
12a	2" X 2" cover only	45711
12b	Cover gasket	11314
12c	6 qt. pot S.S. for trap	45712
12d	2-3/8" float ball	45761
12e	6 qt. bail only	45713
13	2" electrode assembly, tri-clamp	45769-1
13	1-1/2" electrode assembly, plug style	45769-2
13a	Long electrodes (2 required)	45770
13b	Short electrode (1 required)	45771
13c	2" x 3 hole electrode block, tri-clamp	45774
13d	1-1/2" x 3 hole electrode block, plug style	45775
15	3 probe Liquid Level Control	45725
	2" tri-clamp connection	45725
16	Electrode cord with cap	45784
16a	Electrode cap only	45721
17	Panel mounting frame	45786
18-1	2" S.S. glass to clamp to clamp tee	45788
18-2	2" wash tee, glass	46171
18a	2" plastic coupling	45292-1
18b	1-1/2" plastic coupling 6004	45326
19	25 liter jar with 3 - 2" inlets	45735
20-1	2" 90° clamp to thread J bend	45787
20-2	2" 90° J bend thread to glass	45767

### GLASS RECEIVER PARTS

REF.	DESCRIPTION	PART #
	3/4 HP pump and motor horiz. discharge	45885
1	3/4 HP motor only 3450 RPM	48742
2a	Classic milk pump horiz. discharge	45739
3	Pump mounting bracket	45741
4	Milk pump plate (old style)	45744
	Milk pump plate for P-7 pump	48764
	Classic milk pump plate	48782
5	Milk pump gasket (old style) flat	45745
	Milk pump gasket for P-7 pump, L style	48748
	Classic milk pump gasket ("U" Shaped)	48755
6	New Style Complete Seal Assembly	45747-1
8	S.S. retainer pin	45751
9	2 blade impeller for P7 pump	45752

### OPTIONAL ACCESSORIES

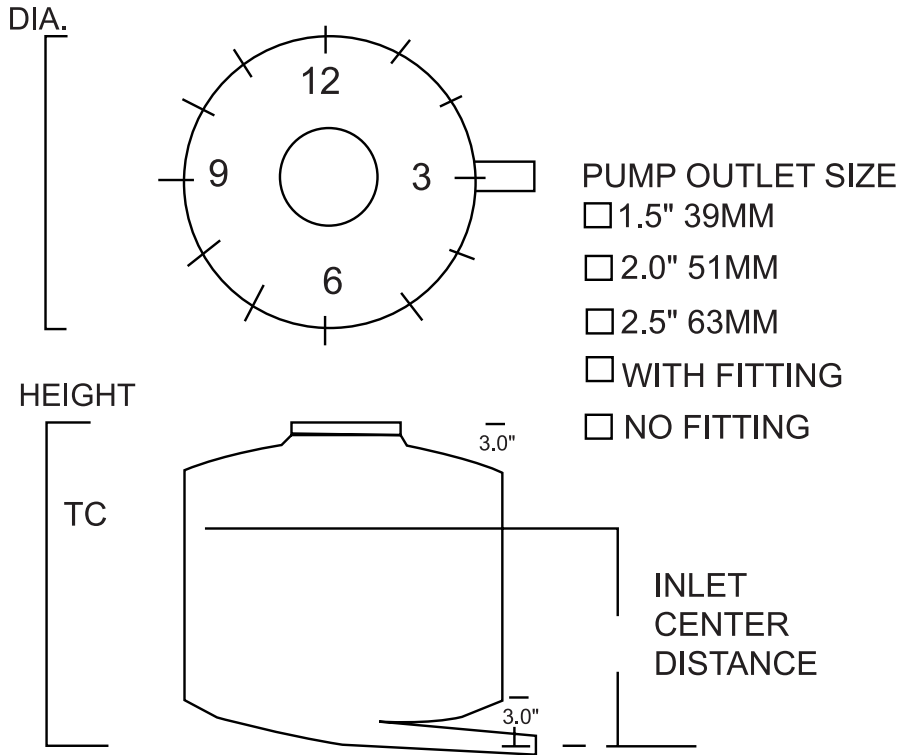
REF.	DESCRIPTION	PART #
27	2" diversion tee to glass	48213
27a	1-1/2" diversion tee to glass	48212

DEALER # \_\_\_\_\_  
 DEALER \_\_\_\_\_

DATE \_\_\_\_\_

PO# \_\_\_\_\_

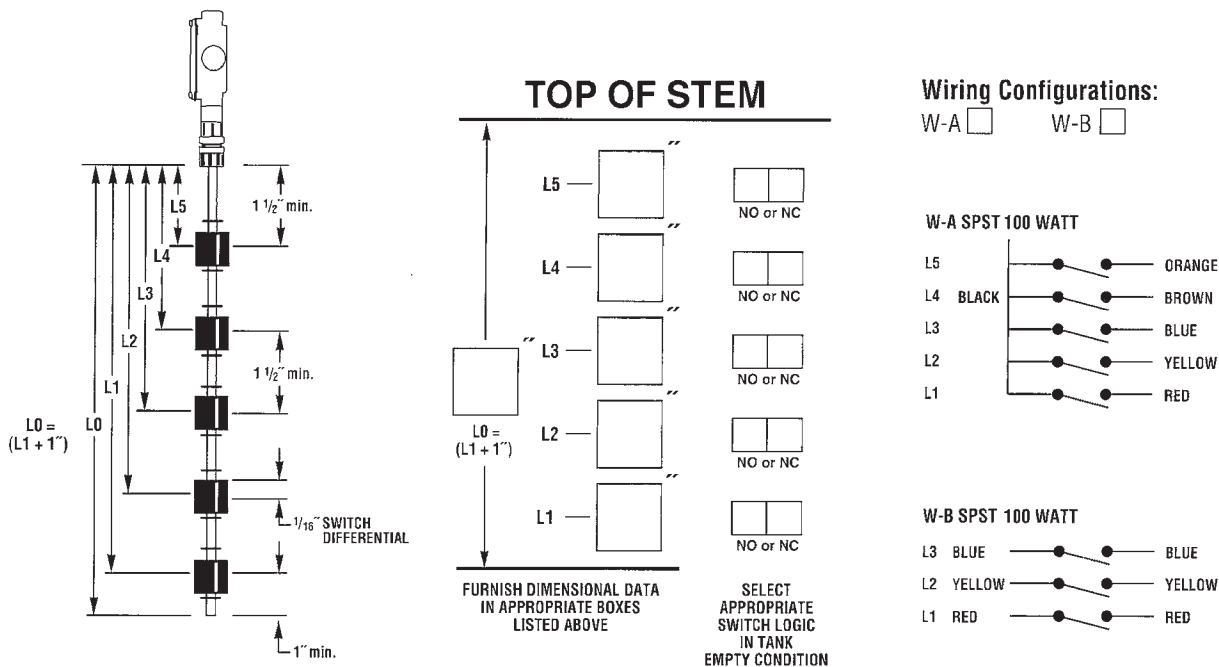
## SCHLUETER MILK RECEIVER ORDER FORM



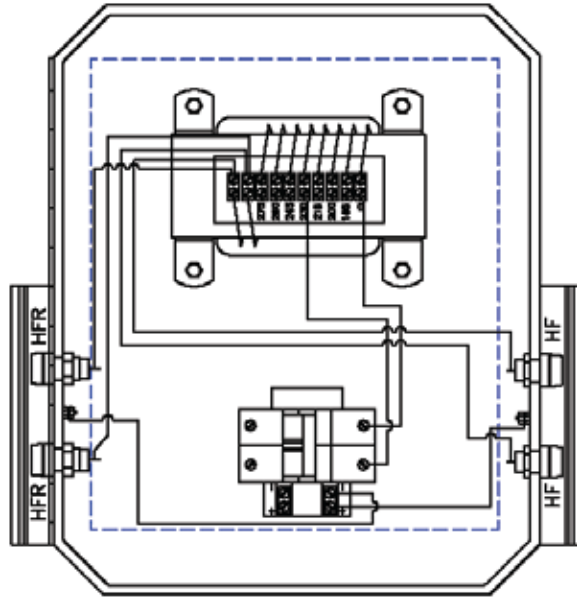
Total Capacity		Dimensions *
12 Gallon	<input type="checkbox"/>	14"D x 18"H
16 Gallon	<input type="checkbox"/>	18"D x 18"H
26 Gallon	<input type="checkbox"/>	18"D x 24"H
55 Gallon	<input type="checkbox"/>	26"D x 24"H
69 Gallon	<input type="checkbox"/>	26"D x 30"H
82 Gallon	<input type="checkbox"/>	26"D x 36"H
96 Gallon	<input type="checkbox"/>	26"D x 40"H

\*Maximum dimensions

## ORDER FORM FOR CUSTOM MULTI-STAGE LEVEL CONTROL

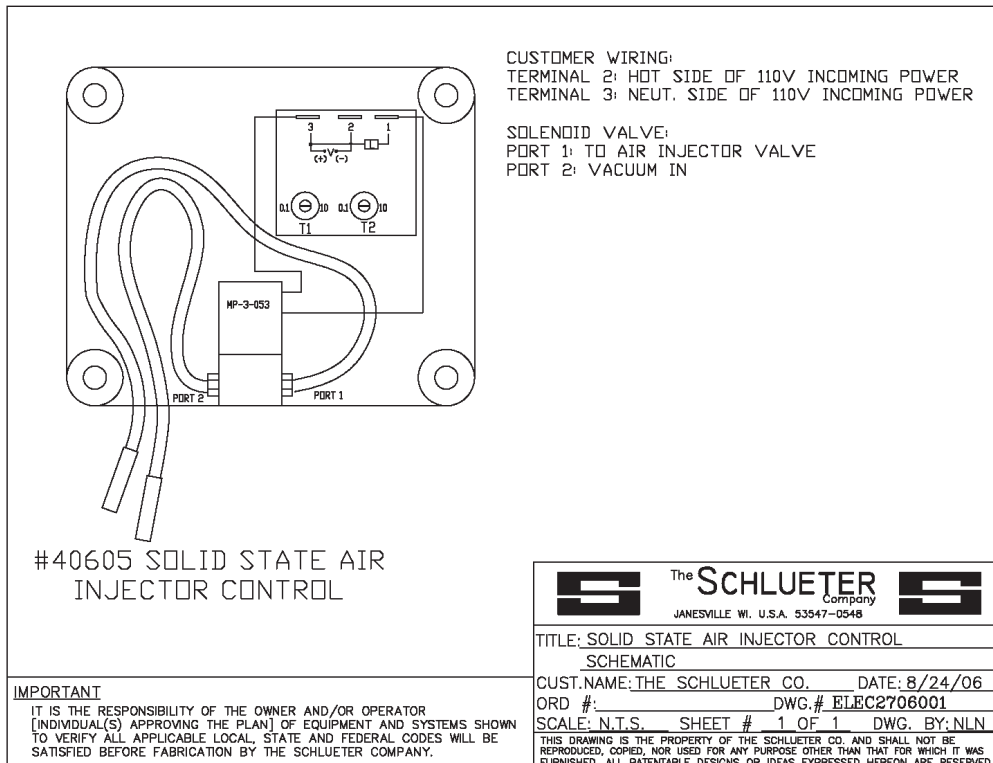


## SCHLUETER AC/DC POWER SUPPLY FOR DETACHERS AND PULSATORS

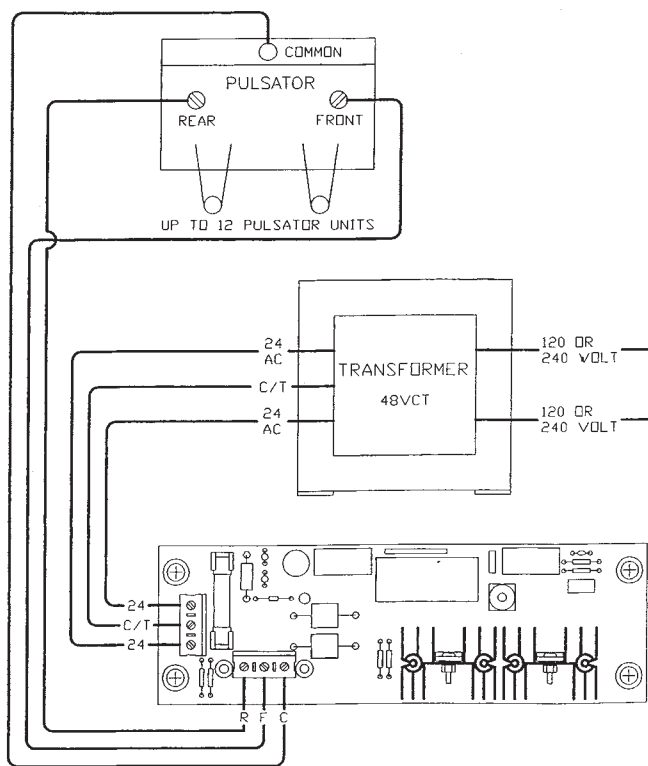


	PRIMARY INPUT VOLTAGE					
TAP	200V	210V	220V	230V	240V	250V
185	21.7	22.7	23.8	24.9	26.0	27.1
200	20.0	21.0	22.0	23.0	24.0	25.1
215	18.6	19.5	20.5	21.4	22.3	23.3
230	17.4	18.3	19.1	20.0	20.9	21.8
245	16.4	17.2	18.0	18.8	19.6	20.5
260	15.4	16.2	16.9	17.7	18.5	19.3
275	14.5	15.2	16.0	16.7	17.5	18.2

## SCHLUETER SAFGARD AIR INJECTOR SYSTEM



## WIRING DIAGRAM FOR #23068/23071 PULSATION CONTROLLER



### Powervolt Branded Transformer Wiring

For 120v operation Tie (1) to (2) & (3) to (4) fuse at 5 AMPS

For 240V operation Tie (2) to (3) (1) and (4) are input voltage, fuse at 3 AMPS

### Pacific Transformer Wiring

#### For 115 Volt input

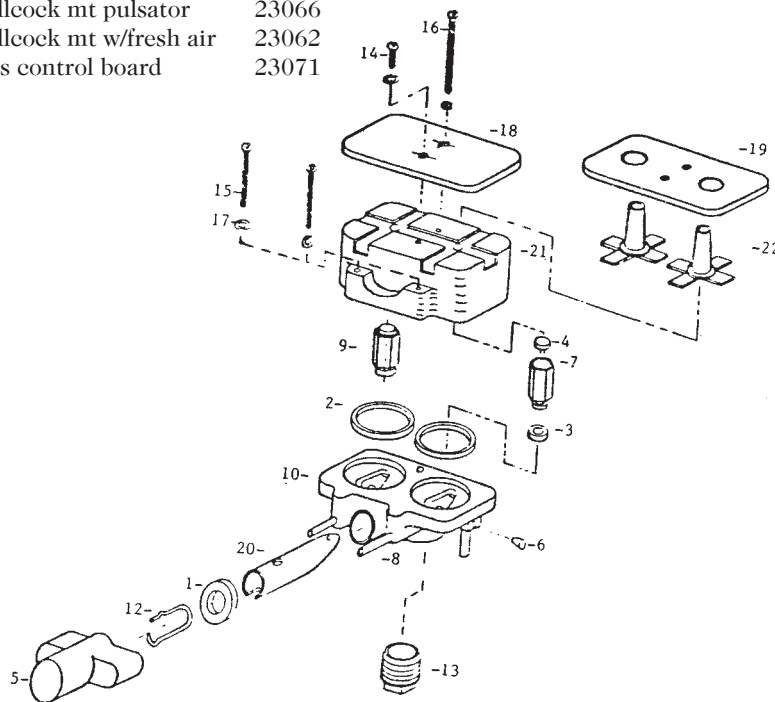
Connect WHITE and BROWN to one supply  
Connect BLACK and RED to other supply  
And 24 Volt output  
Connect ORANGE to one output  
Connect YELLOW and BLUE together  
Connect VIOLET to other output

#### For 230 Volt input

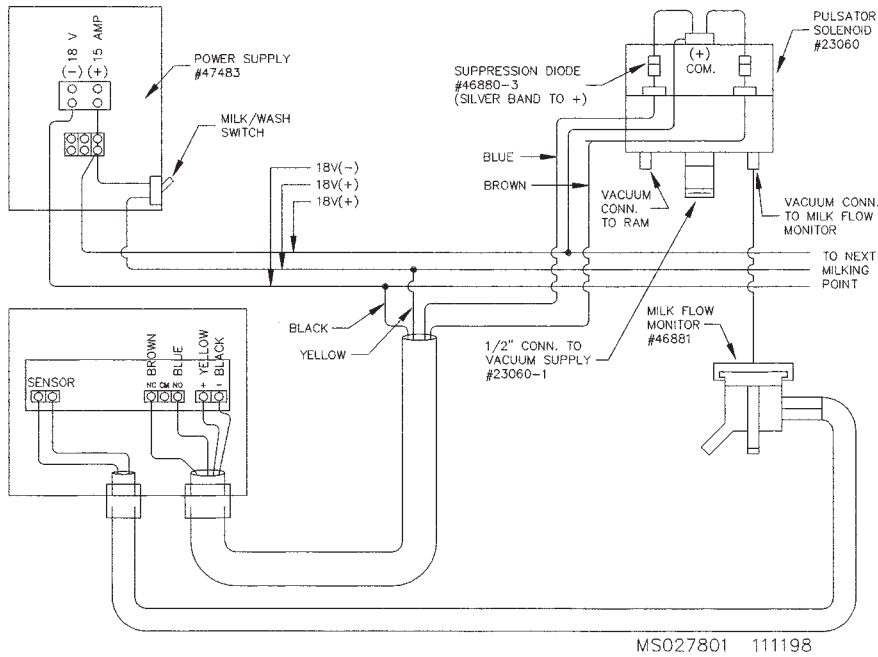
Connect WHITE to one supply  
Connect BLACK and BROWN together  
Connect RED to other supply  
And 24 Volt output  
Connect ORANGE to one output  
Connect YELLOW and BLUE together  
Connect VIOLET to other output

## B/M ELECTRIC PULSATOR PARTS

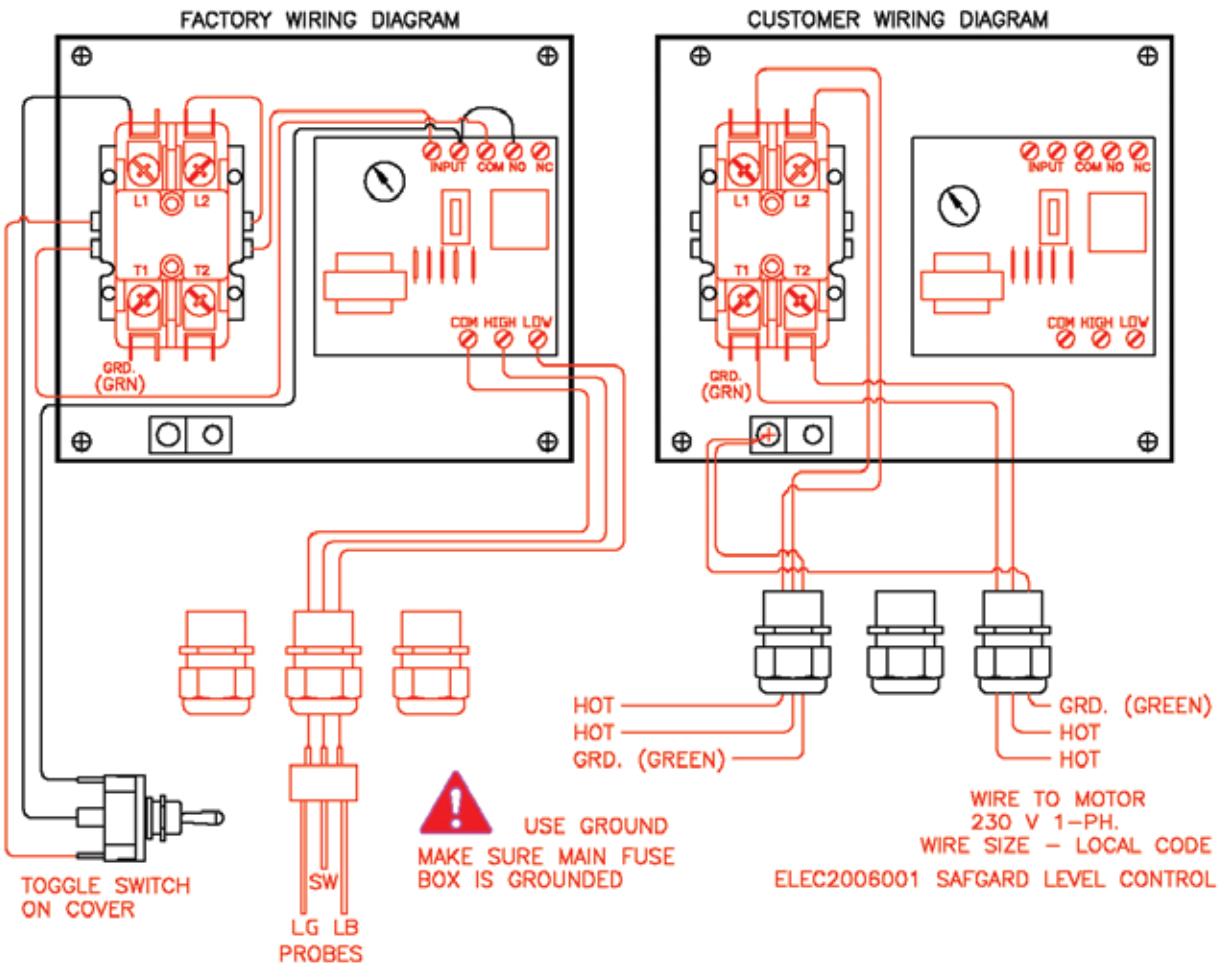
ITEM #	DESCRIPTION	PART #	ITEM #	DESCRIPTION	PART #
1	7/8" nipple "o" ring	23078-1		perm mt pulsator	23060
2	coil base o-ring	23078-2		perm mt w/fresh air	23061
3	piston base cap	23078-3		stallcock mt pulsator	23066
4	piston top insert	23078-4		stallcock mt w/fresh air	23062
5	nipple protector	23078-5		puls control board	23071
6	cleanout plug	23078-6			
7	bare piston	23078-7			
8	contact pin	23078-8			
9	piston cmpt	23078-9			
10	base only	23066-1			
11	base assembly	23066-2			
12	contact spring	23066-3			
13	1/2" red plug	23066-4			
14	1/2" ss screw	23066-5			
15	1.5 ss screw	23066-6			
16	2" ss screw	23066-7			
17	lock washer	23077-8			
18	ss cover	23065			
19	fresh air cover	23065-1			
20	suction tube	23065-2			
21	red coil	23076			
22	fresh air nipple	23079-1			
	fresh air kit	23079			
	perm mount base	23066-p			
	repair kits	23078			
	thread on stallcock	23067			
	clamp on stallcock	23072			
	stallcock rep kits	23077			



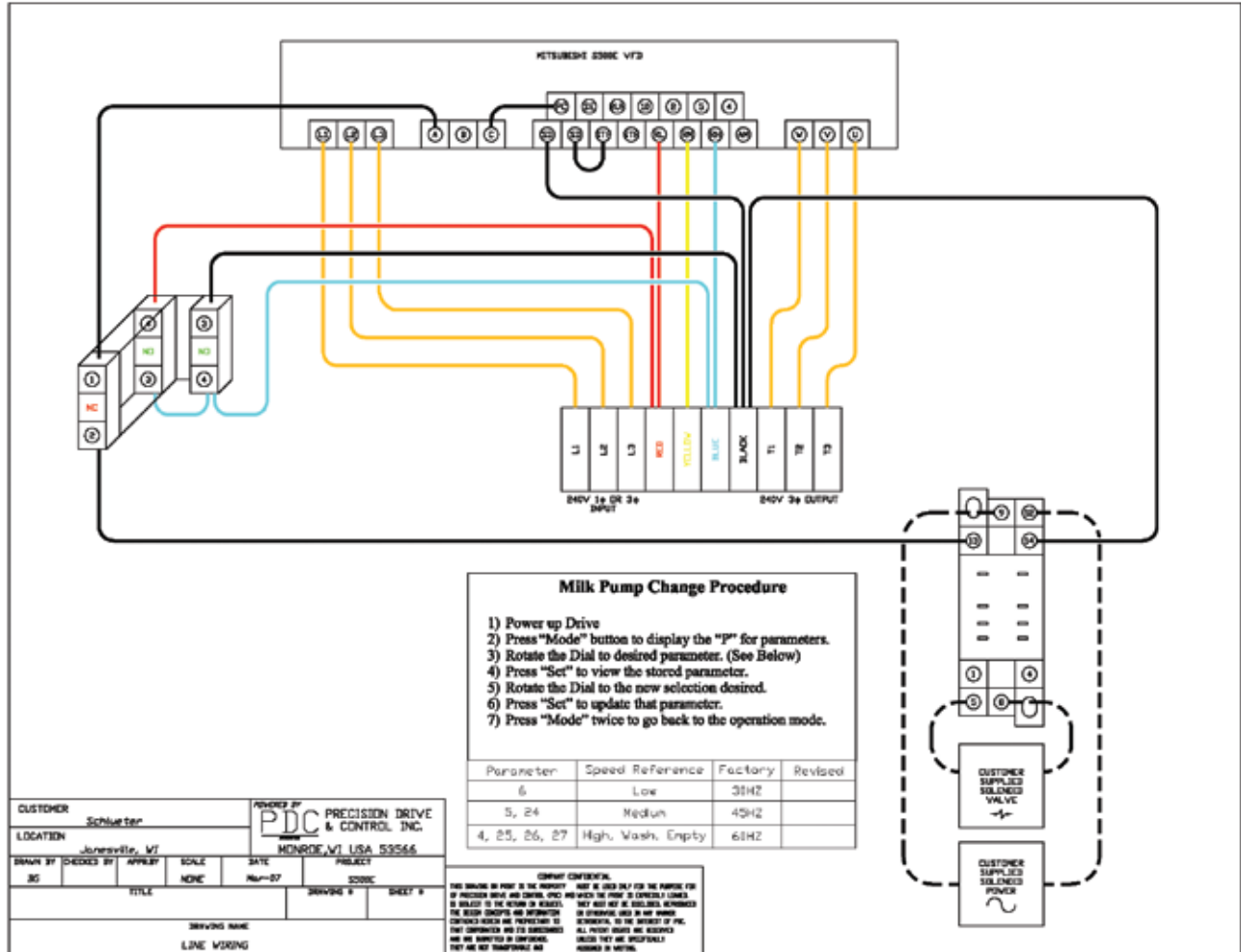
## PTO DETACHER WIRING SCHEMATIC. FOR AUTO WASH, START WITH VACUUM PUMP.



## WIRING DIAGRAM STANDARD LIQUID LEVEL CONTROL



## WIRING DIAGRAM FOR VARIABLE SPEED MILK PUMP DRIVE



## WIRING FOR VARIABLE SPEED VACUUM PUMP DRIVE

### MITSUBISHI A700 SIMPLE WIRING

Three Phase power into L1, L2, & L3

Single Phase power into L1, & L2

Proper grounding is required

Motor Connection to T1, T2, T3 (U,V,W)

Vacuum Transducer white wire to Terminal "4"

Vacuum Transducer brown wire to Terminal "PC"

Put a jumper wire from terminal "5" to "SD"

Put a jumper wire from terminal "MRS" to "SD"

Drive RUN Command needs to be a dry contact (No Voltage Present) from Terminal "STF" to "SD." Opening and closing will Start/Stop the Inverter. If your source is a live 120 volt contact, a relay will need to be installed to isolate voltage from the Inverter.

To bypass the Vacuum Transducer if required for wash, close a dry contact (No Voltage Present) from RH to SD terminals. See program page for setting speed of bypass.

Default Vacuum set point is 13.0" See program page for setting vacuum level.

Refer to manual for complete detail on drive. It is always advised to have a licensed electrician install.